

FUTURA

Batyline® DUO



Rives



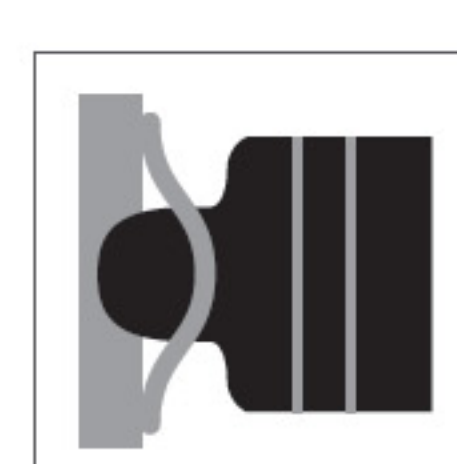
LFM3113 Galet 9714



LFM3113 Obsidian 9718

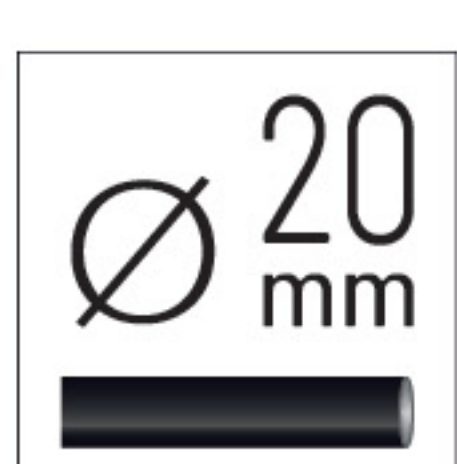


LFM3113 Mistral 9716



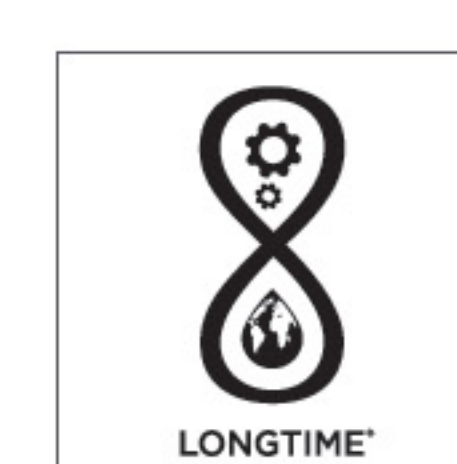
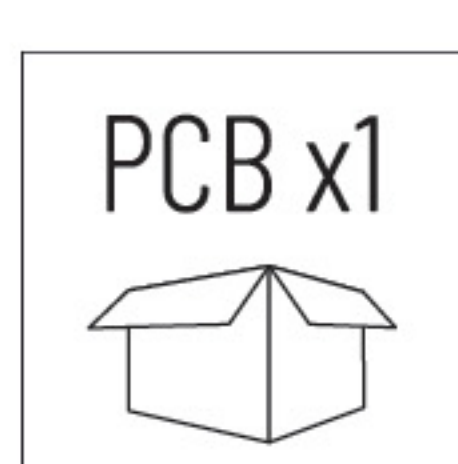
MULTI
POSITION

ACIER
STEEL

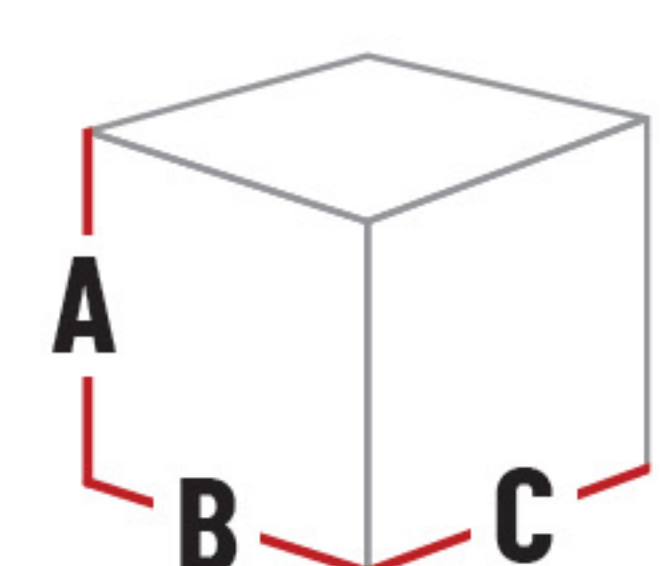


ANTI-UV

7.60 kg



Frame in Ø20 mm steel tubing. Ergonomic resin armrests. Position adjustment with fixed armrests and stabilisers. Removable canvas with elastomere clip fastening (Lafuma patent). Adjustable and removable cushioned headrest. Protective footrest ring and high stability foot pads.



OPEN

A : 81 > 115 cm **B** : 83 > 163 cm **C** : 70 cm

Seat high: 40 cm

CLOSED

A : 96 cm **B** : 18 cm **C** : 70 cm